

# Inkjet codes with molecular traceability



**SigNature**<sup>®</sup>  
molecular ink

Turnkey, high-volume ink offering per-part traceability.



Origin | Authenticity  
Provenance | Quality  
Integrity | Sustainability

**VIDEOJET**<sup>®</sup>

applied**dn**sciences



With over 40 years of industry-leading, continuous inkjet experience, Videojet delivers the smartest, simplest-operate and most-efficient CIJ printers in the industry.

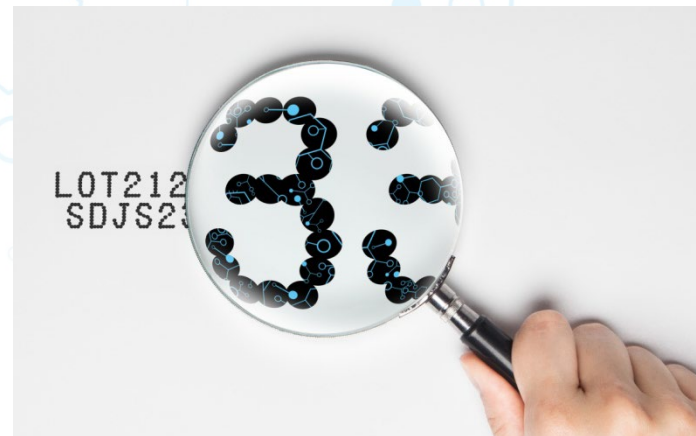


By integrating bio and information technologies, Applied DNA has effectively refined, optimized and harnessed the power of DNA, creating an effective front-line security tool featuring absolute security, easy recovery and rapid analysis.



# Molecular Traceability

- Consumers are connecting with brands that openly share an accurate account of supply and distribution chain activities.
- Product origin, purity, authenticity, sustainability – if a brand can certify these, it has a distinct advantage over the competition.
- Adding brand, lot or per-part molecular traceability to items and packaging is the first step toward supply chain transparency.



# SigNature<sup>®</sup> Molecular Ink

- SigNature<sup>®</sup> molecular ink, delivered with the Videojet 1860M printer, transforms inkjet. codes into a secure supply chain tracking tools.
- Molecular ink contains indelible tags that can be used to verify the origin and provenance of any item or package.
- Testing for molecular tags can occur at any point in the supply/distribution chain. Collection, analysis and tracking of testing results form the basis of process improvement that elevates performance, efficiency and profitability.



# SigNature<sup>®</sup> Molecular Ink

- Integrating the power of SigNature<sup>®</sup> molecular ink into a new or existing production line is quick and seamless. The new Videojet 1860M printer accepts a secure SmartCartridge<sup>®</sup> loaded with molecular ink – unique molecular tags provide for each customer application.



# Molecular Ink Variants



V4221M Black



V4259M Clear/UV

# SigNature<sup>®</sup> Molecular Ink



Unique to each customer, SigNature<sup>®</sup> molecular ink is created with the addition of a unique, secure molecular tag. V4221M black and V4259M fluorescent variants are available.



SigNature molecular ink is delivered via a secure SmartCartridge<sup>®</sup>. V4221M and V4259M can be used together on one item.



SmartCartridge is paired with a Videojet 1860M continuous inkjet printer.



**TAG** products and packaging.



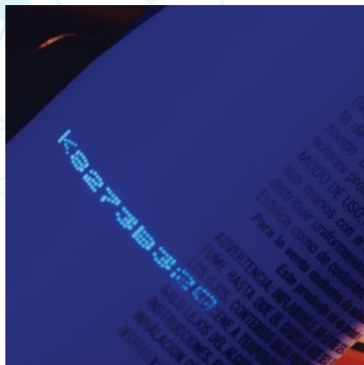
**TEST** to authenticate at any point along the supply chain. V4529 fluoresces blue under UV light, affording a quick-screen option.



**TRACK** to collect chain of custody data for traceability.



# Applications



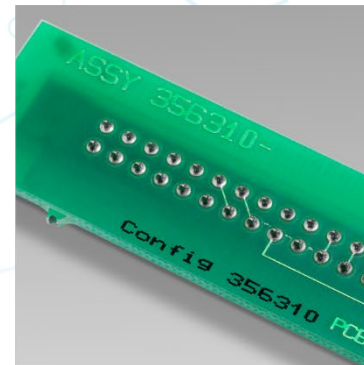
personal care



critical components



food and beverages



electronics

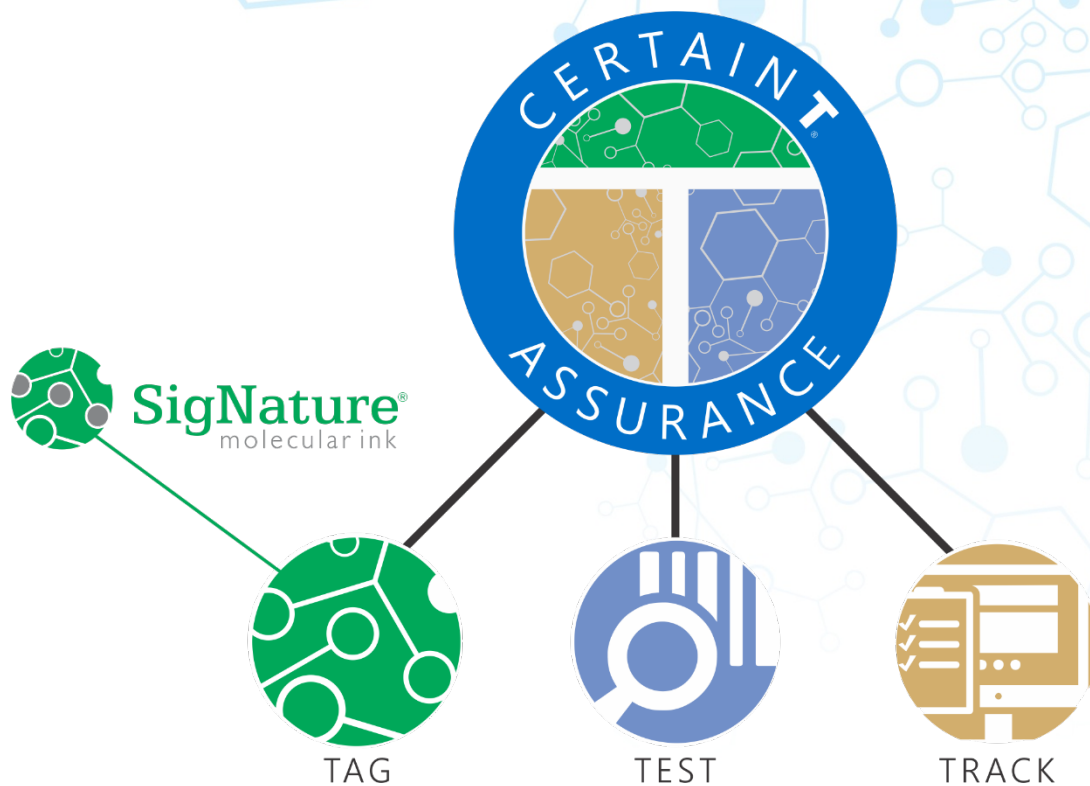


from molecular traceability comes transparency, trust, CertainT®

CertainT® is the combination of  
bio and information  
technologies creating sound,  
secure and transparent supply  
and distribution environments.

CertainT includes three  
elements: Tag, Test and Track.







Products, packaging and articles are tagged with SigNature® molecular ink via the Videojet 1860M printer. All barriers to entry have been removed with ease of integration, value, the exceptional performance Videojet printer platforms and sophistication of Applied DNA Science molecular tagging technology.



The SigNature<sup>®</sup> molecular tag can be recovered and analyzed at any point in the distribution chain. Proactive and reactive testing can be achieved with in-field equipment or at Applied DNA laboratories. Every application is different - testing plans are designed to meet your objectives and budget.



TRACK

All CertainT® activity data is captured and stored in a secure database. Data is reviewed and analyzed; dossier data provide proof of product claims such as authenticity, origin and provenance.

# Supply and Distribution Chain Integrity Verified, Documented and Shared







**SigNature**<sup>®</sup>  
molecular ink

Applied DNA Sciences  
T 631.240.8800  
[adnas.com/videojet](http://adnas.com/videojet)